

\$0 - 11104 107 Avenue, Edmonton

MLS® #E4363600

\$0

0 Bedroom, 0.00 Bathroom,
Retail on 0.00 Acres

Queen Mary Park, Edmonton, AB

Street facing Corner building with Main Floor Retail space for lease. Great frontage onto busy arterial road 107 Avenue. Large open showroom with beautiful reception, fireplace, drop ceiling and display cases. 3 Private offices, Kitchen, Boardroom and washroom complete this 3027 sq ft of Retail/office spaces. Additionally, there is a unique PATIO adjoining the parking to the lease space. Mixed use zoning which works for a variety of uses, including but not limited to lighting showroom, restaurant, medical, optical and professional uses. Private and street parking available.

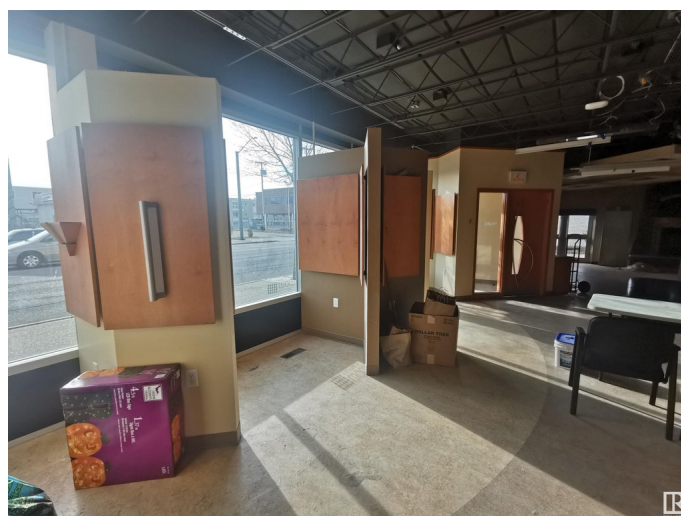
Built in 1971

Essential Information

MLS® #	E4363600
Bathrooms	0.00
Acres	0.00
Year Built	1971
Type	Retail
Status	Active

Community Information

Address	11104 107 Avenue
Area	Edmonton
Subdivision	Queen Mary Park



City	Edmonton
County	ALBERTA
Province	AB
Postal Code	T5H 0X8

Exterior

Exterior	Block
Construction	Block

Additional Information

Date Listed	October 27th, 2023
Days on Market	626
Zoning	Zone 08

DATA IS DEEMED RELIABLE BUT IS NOT GUARANTEED ACCURATE BY THE REALTORS® ASSOCIATION OF EDMONTON. COPYRIGHT 2025 BY THE REALTORS® ASSOCIATION OF EDMONTON. ALL RIGHTS RESERVED. Trademarks are owned or controlled by the Canadian Real Estate Association (CREA) and identify real estate professionals who are members of CREA (REALTOR®, REALTORS®) and/or the quality of services they provide (MLS®, Multiple Listing Service®)

Listing information last updated on July 14th, 2025 at 2:32am MDT