

\$3,120,000 - Twp 555 R.rd 222, Rural Sturgeon County

MLS® #E4383273

\$3,120,000

0 Bedroom, 0.00 Bathroom,
Land Commercial on 0.00 Acres

None, Rural Sturgeon County, AB

80 Acres of cleared, flat and dry Heavy Industrial land in the Sturgeon Industrial Heartland. Part of a 320 acre offering immediately adjacent to the Cando Rail Terminal expansion. See MLS E4379793 (80 acres) and MLS E4379791 (160 acres). One mile east of Hwy 825.

Built in 2024

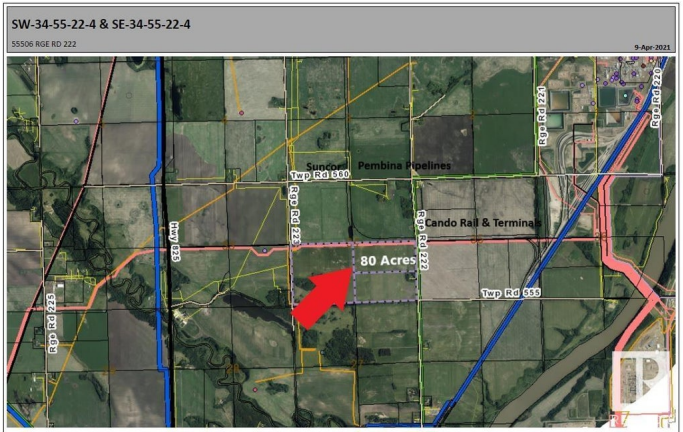
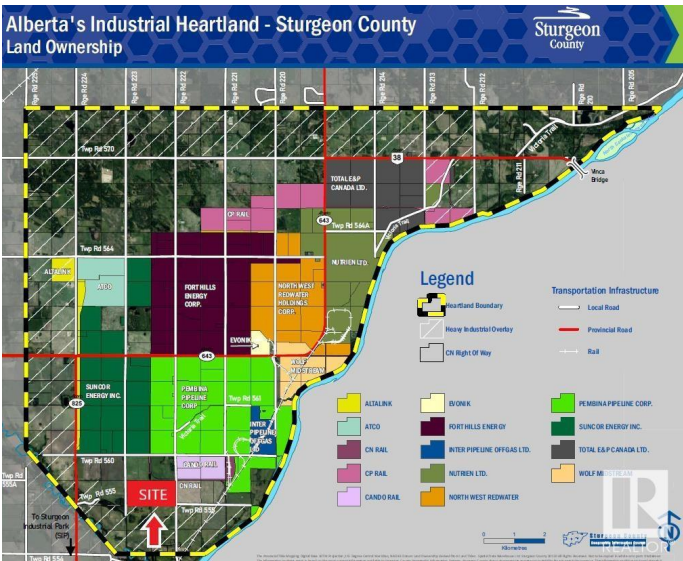
Essential Information

MLS® #	E4383273
Price	\$3,120,000
Bathrooms	0.00
Acres	0.00
Year Built	2024
Type	Land Commercial
Status	Active

Community Information

Address	Twp 555 R.rd 222
Area	Rural Sturgeon County
Subdivision	None
City	Rural Sturgeon County
County	ALBERTA
Province	AB
Postal Code	T0A 1N1

Exterior



Exterior	See Remarks
Construction	See Remarks

Additional Information

Date Listed	April 22nd, 2024
Days on Market	401
Zoning	Zone 60

DATA IS DEEMED RELIABLE BUT IS NOT GUARANTEED ACCURATE BY THE REALTORS® ASSOCIATION OF EDMONTON. COPYRIGHT 2025 BY THE REALTORS® ASSOCIATION OF EDMONTON. ALL RIGHTS RESERVED.Trademarks are owned or controlled by the Canadian Real Estate Association (CREA) and identify real estate professionals who are members of CREA (REALTOR®, REALTORS®) and/or the quality of services they provide (MLS®, Multiple Listing Service®)

Listing information last updated on May 28th, 2025 at 3:02pm MDT