

\$108,900 - 302 10432 76 Avenue, Edmonton

MLS® #E4421218

\$108,900

1 Bedroom, 1.00 Bathroom, 584 sqft

Condo / Townhouse on 0.00 Acres

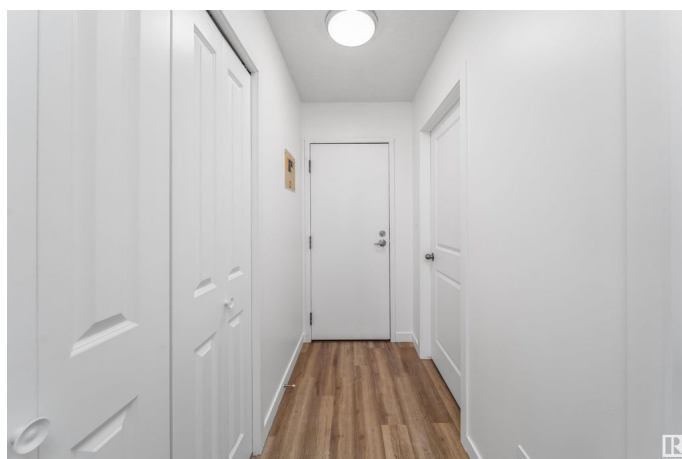
Queen Alexandra, Edmonton, AB

Stunningly Renovated Condo in Prime Location with Low Fees! This upgraded condo features contemporary laminate flooring and a beautifully transformed kitchen with white cabinets, a tiled backsplash, soft-close doors, and brand new stainless steel appliances. Modern lighting and trim add sophistication. The 3-piece bathroom is tastefully updated with a tile surround. Enjoy a spacious balcony for outdoor relaxation. Located near Whyte Ave, Scona High School, coffee shops, restaurants, and recreational amenities, this condo is also just a short bike ride from the University of Alberta. The building has had recent upgrades, including a newer roof and boiler, painted hallways with new flooring, and ultra-secure entry doors. Don't miss out on this fantastic opportunity to own a renovated condo with low fees in a well-maintained building!

Built in 1979

Essential Information

MLS® #	E4421218
Price	\$108,900
Bedrooms	1
Bathrooms	1.00
Full Baths	1
Square Footage	584



Acres	0.00
Year Built	1979
Type	Condo / Townhouse
Sub-Type	Lowrise Apartment
Style	Single Level Apartment
Status	Active

Community Information

Address	302 10432 76 Avenue
Area	Edmonton
Subdivision	Queen Alexandra
City	Edmonton
County	ALBERTA
Province	AB
Postal Code	T6E 1L1

Amenities

Amenities	Deck, Security Door
Parking	Stall

Interior

Appliances	Dryer, Hood Fan, Refrigerator, Stove-Electric, Washer
Heating	Hot Water, Natural Gas
# of Stories	3
Stories	3
Has Basement	Yes
Basement	None, No Basement

Exterior

Exterior	Wood, Stucco
Exterior Features	Low Maintenance Landscape, Playground Nearby, Public Swimming Pool, Public Transportation, Schools
Roof	Tar & Gravel
Construction	Wood, Stucco
Foundation	Concrete Perimeter

Additional Information

Date Listed	February 12th, 2025
Days on Market	164

Zoning	Zone 15
Condo Fee	\$316



DATA IS DEEMED RELIABLE BUT IS NOT GUARANTEED ACCURATE BY THE REALTORS® ASSOCIATION OF EDMONTON. COPYRIGHT 2025 BY THE REALTORS® ASSOCIATION OF EDMONTON. ALL RIGHTS RESERVED.Trademarks are owned or controlled by the Canadian Real Estate Association (CREA) and identify real estate professionals who are members of CREA (REALTOR®, REALTORS®) and/or the quality of services they provide (MLS®, Multiple Listing Service®)

Listing information last updated on July 26th, 2025 at 8:02pm MDT