

\$798,888 - 10148 87 Street, Edmonton

MLS® #E4423198

\$798,888

2 Bedroom, 1.00 Bathroom, 1,081 sqft

Single Family on 0.00 Acres

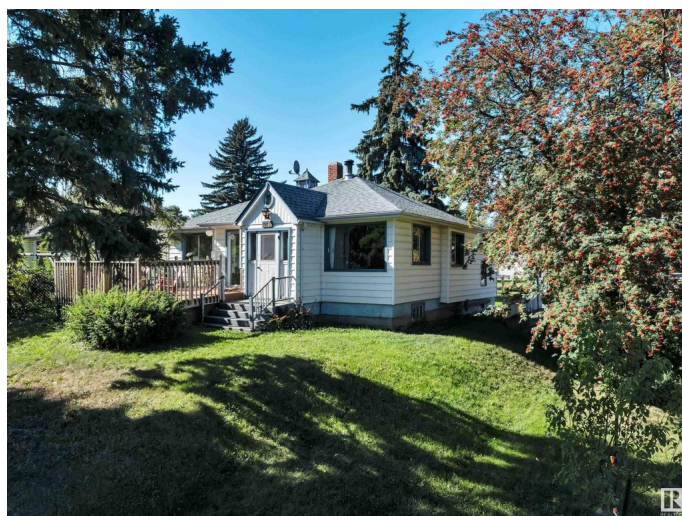
Riverdale, Edmonton, AB

HUGE CORNER LOT NEXT TO THE RIVER! UNBEATABLE LOCATION! IDEAL FOR FUTURE DEVELOPMENT! Searching for the ideal lot close to downtown in desirable Riverdale? This 10,354 sq ft lot (approx 50' x 205') with an existing bungalow in place is the perfect location for multifamily development or build your dream home! Located only steps to river valley trails & downtown, this is a rare opportunity for investors seeking a one of a kind property. The property has newer shingles, furnace, HWT; liveable until you decide on your infill aspirations. Quiet & serene, yet close to the action. Don't miss it!

Built in 1946

Essential Information

MLS® #	E4423198
Price	\$798,888
Bedrooms	2
Bathrooms	1.00
Full Baths	1
Square Footage	1,081
Acres	0.00
Year Built	1946
Type	Single Family
Sub-Type	Detached Single Family
Style	Bungalow



Status Active

Community Information

Address 10148 87 Street
Area Edmonton
Subdivision Riverdale
City Edmonton
County ALBERTA
Province AB
Postal Code T5H 1N4

Amenities

Amenities Deck, Hot Water Natural Gas
Parking No Garage

Interior

Appliances Refrigerator, Stove-Electric
Heating Forced Air-1, Natural Gas
Stories 1
Has Basement Yes
Basement Full, Partially Finished

Exterior

Exterior Wood
Exterior Features Back Lane, Golf Nearby, Picnic Area, Schools, Shopping Nearby
Roof Asphalt Shingles
Construction Wood
Foundation Concrete Perimeter

Additional Information

Date Listed February 27th, 2025
Days on Market 81
Zoning Zone 13

DATA IS DEEMED RELIABLE BUT IS NOT GUARANTEED ACCURATE BY THE REALTORS® ASSOCIATION OF EDMONTON. COPYRIGHT 2025 BY THE REALTORS® ASSOCIATION OF EDMONTON. ALL RIGHTS RESERVED. Trademarks are owned or controlled by the Canadian Real Estate Association (CREA) and identify real estate professionals who are members of CREA (REALTOR®, REALTORS®) and/or the quality of services they provide (MLS®, Multiple Listing Service®)

Listing information last updated on May 19th, 2025 at 3:47pm MDT