

## \$89,900 - 212 1624 48 Street, Edmonton

MLS® #E4425923

**\$89,900**

1 Bedroom, 1.00 Bathroom, 607 sqft

Condo / Townhouse on 0.00 Acres

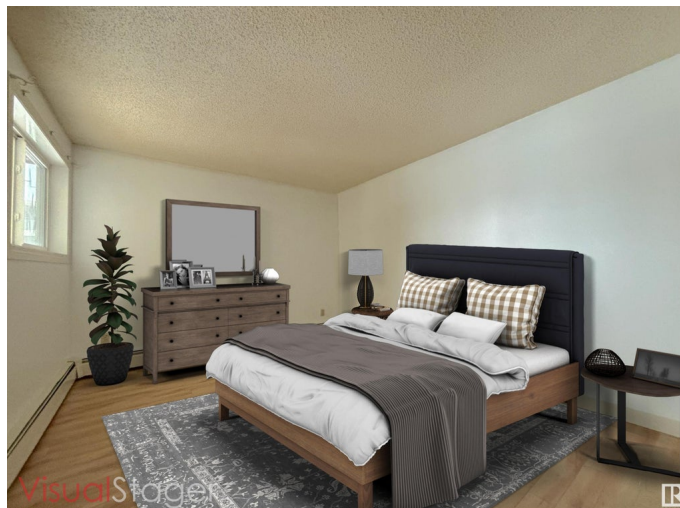
Pollard Meadows, Edmonton, AB

Welcome to Millwoods Terrace in Pollard Meadows! This bright & spacious 1-bedroom, 1-bathroom condo offers a large balcony and an open-concept living space, in a well-maintained adult-only (+18) building. Located on the second floor, this unit features a comfortable living room, kitchen, 4-piece bathroom, and extra storage space. Enjoy easy access to amenities including Mill Woods Town Centre, Grey Nuns Hospital, and South Edmonton Common. Stay active with nearby Pollard Meadows Park, Ridgewood Park, and Mill Woods Recreation Centre. With transit, schools, grocery stores, and restaurants just minutes away, this is a perfect opportunity for first-time buyers, investors, or those looking to downsize!

Built in 1981

### Essential Information

MLS® #	E4425923
Price	\$89,900
Bedrooms	1
Bathrooms	1.00
Full Baths	1
Square Footage	607
Acres	0.00
Year Built	1981



Type	Condo / Townhouse
Sub-Type	Lowrise Apartment
Style	Single Level Apartment
Status	Active

### Community Information

Address	212 1624 48 Street
Area	Edmonton
Subdivision	Pollard Meadows
City	Edmonton
County	ALBERTA
Province	AB
Postal Code	T6L 5P1

### Amenities

Amenities	See Remarks
Parking	Stall

### Interior

Appliances	See Remarks
Heating	Hot Water, Natural Gas
# of Stories	4
Stories	1
Has Basement	Yes
Basement	None, No Basement

### Exterior

Exterior	Wood, Stucco
Exterior Features	Flat Site, Low Maintenance Landscape, Park/Reserve, Playground Nearby, Public Transportation, Schools, Shopping Nearby
Roof	Asphalt Shingles
Construction	Wood, Stucco
Foundation	Slab

### Additional Information

Date Listed	March 15th, 2025
Days on Market	81
Zoning	Zone 29
RE / Bank Owned	Yes

Condo Fee                \$351

DATA IS DEEMED RELIABLE BUT IS NOT GUARANTEED ACCURATE BY THE REALTORS® ASSOCIATION OF EDMONTON. COPYRIGHT 2025 BY THE REALTORS® ASSOCIATION OF EDMONTON. ALL RIGHTS RESERVED.Trademarks are owned or controlled by the Canadian Real Estate Association (CREA) and identify real estate professionals who are members of CREA (REALTOR®, REALTORS®) and/or the quality of services they provide (MLS®, Multiple Listing Service®)

Listing information last updated on June 4th, 2025 at 4:02pm MDT