

\$215,000 - 11360 100 Street, Westlock

MLS® #E4426800

\$215,000

0 Bedroom, 0.00 Bathroom,
Land Commercial on 0.00 Acres

Westlock, Westlock, AB

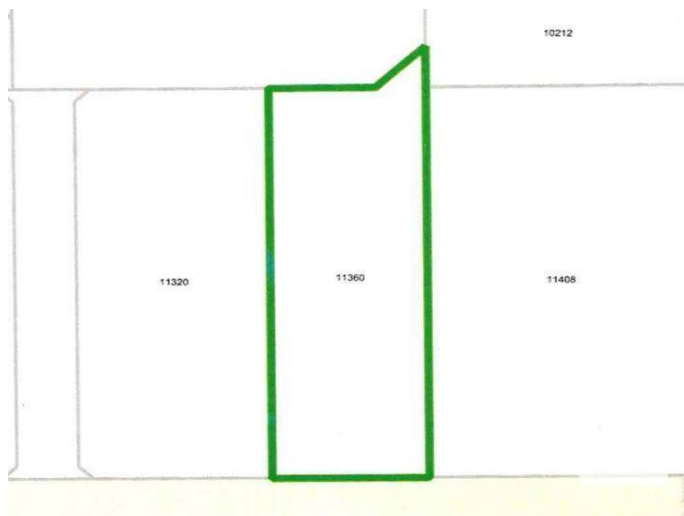
HIGHWAY COMMERCIAL LOT located on the edge of town with good visibility. Westlock has limited highway commercial opportunities available, making this a rare opportunity. With a population of just under 5000 and another 5000 in the surrounding county Westlock is the hub for business to the north and surrounding areas. Permitted and discretionary uses listed in pictures. Offsite levies and service road development apply.

Essential Information

MLS® #	E4426800
Price	\$215,000
Bathrooms	0.00
Acres	0.00
Type	Land Commercial
Status	Active

Community Information

Address	11360 100 Street
Area	Westlock
Subdivision	Westlock
City	Westlock
County	ALBERTA
Province	AB
Postal Code	T7P 2P4



Additional Information

Date Listed March 21st, 2025
Days on Market 152
Zoning Zone 70

DATA IS DEEMED RELIABLE BUT IS NOT GUARANTEED ACCURATE BY THE REALTORS® ASSOCIATION OF EDMONTON. COPYRIGHT 2025 BY THE REALTORS® ASSOCIATION OF EDMONTON. ALL RIGHTS RESERVED.Trademarks are owned or controlled by the Canadian Real Estate Association (CREA) and identify real estate professionals who are members of CREA (REALTOR®, REALTORS®) and/or the quality of services they provide (MLS®, Multiple Listing Service®)
Listing information last updated on August 20th, 2025 at 3:17pm MDT