

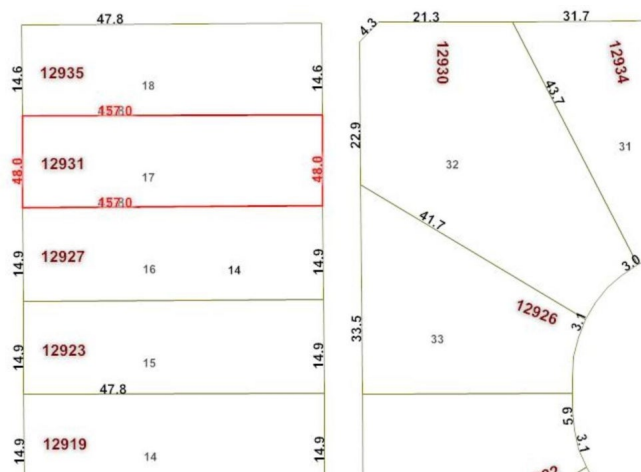
\$274,900

Lauderdale, Edmonton, AB

48' X 157 ' LOT IN LAUDERDALE. READY
FOR MLI SELECT 4 PLEX APPLICATION.

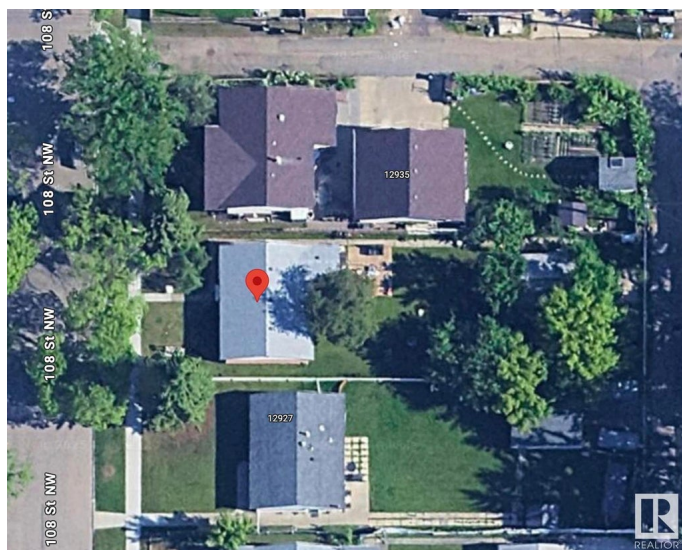


MLS® #	E4431882
Price	\$274,900
Bathrooms	1.00
Full Baths	1
Acres	0.00
Type	Single Family
Sub-Type	Vacant Lot/Land
Status	Active



Community Information

Address	12931 108 Street
Area	Edmonton
Subdivision	Lauderdale
City	Edmonton
County	ALBERTA
Province	AB
Postal Code	T5E 4X2



Amenities

Parking	Single Garage Detached
---------	------------------------

Exterior

Exterior Features Public Transportation, Schools, Shopping Nearby

Additional Information

Date Listed April 20th, 2025
Days on Market 17
Zoning Zone 01

DATA IS DEEMED RELIABLE BUT IS NOT GUARANTEED ACCURATE BY THE REALTORS® ASSOCIATION OF EDMONTON. COPYRIGHT 2025 BY THE REALTORS® ASSOCIATION OF EDMONTON. ALL RIGHTS RESERVED.Trademarks are owned or controlled by the Canadian Real Estate Association (CREA) and identify real estate professionals who are members of CREA (REALTOR®, REALTORS®) and/or the quality of services they provide (MLS®, Multiple Listing Service®)
Listing information last updated on May 7th, 2025 at 9:17am MDT