

\$399,900 - 24 Langley Avenue, St. Albert

MLS® #E4432889

\$399,900

5 Bedroom, 2.50 Bathroom, 1,208 sqft
Single Family on 0.00 Acres

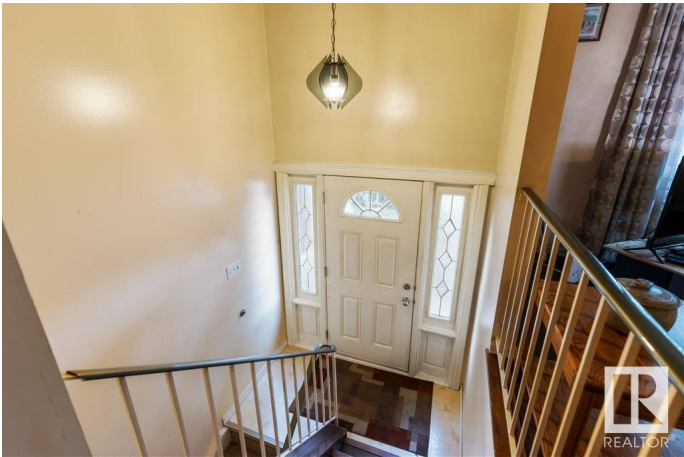
Lacombe Park, St. Albert, AB

Home ownership awaits you! Check out this three plus bedroom Bi-level with over 1200 sq ft. plus three bathrooms. Located in Lacombe Park, close to walking trails, Lacombe Park man made lake, schools, shopping and more. Many upgrades have been completed such as: Windows except the patio doors (approx. 2019), Furnace-hotwater tank (approx. 2024), laminate floor (living room, dining room, and hallway) along with maintenance free fencing. The double car garage completes this package.

Built in 1973

Essential Information

MLS® #	E4432889
Price	\$399,900
Bedrooms	5
Bathrooms	2.50
Full Baths	2
Half Baths	1
Square Footage	1,208
Acres	0.00
Year Built	1973
Type	Single Family
Sub-Type	Detached Single Family
Style	Bi-Level
Status	Active



Community Information

Address	24 Langley Avenue
Area	St. Albert
Subdivision	Lacombe Park
City	St. Albert
County	ALBERTA
Province	AB
Postal Code	T8N 2B6

Amenities

Amenities	Deck
Parking Spaces	6
Parking	Double Garage Detached

Interior

Interior Features	ensuite bathroom
Appliances	Dishwasher-Built-In, Dryer, Refrigerator, Stove-Electric, Washer
Heating	Forced Air-1, Natural Gas
Stories	2
Has Basement	Yes
Basement	Full, Finished

Exterior

Exterior	Wood, Stucco
Exterior Features	Fenced, Flat Site, Landscaped, Playground Nearby, Public Transportation, Schools, Shopping Nearby
Roof	Asphalt Shingles
Construction	Wood, Stucco
Foundation	Concrete Perimeter

Additional Information

Date Listed	April 25th, 2025
Days on Market	29
Zoning	Zone 24

DATA IS DEEMED RELIABLE BUT IS NOT GUARANTEED ACCURATE BY THE REALTORS® ASSOCIATION OF EDMONTON. COPYRIGHT 2025 BY THE REALTORS® ASSOCIATION OF EDMONTON. ALL RIGHTS RESERVED.Trademarks are owned or controlled by the Canadian Real Estate Association (CREA) and identify real estate professionals who are members of CREA (REALTOR®, REALTORS®) and/or the quality of services they provide (MLS®, Multiple Listing Service®)

Listing information last updated on May 24th, 2025 at 2:47pm MDT