

\$435,000 - 2 Leon Place, St. Albert

MLS® #E4435361

\$435,000

4 Bedroom, 2.50 Bathroom, 1,228 sqft

Single Family on 0.00 Acres

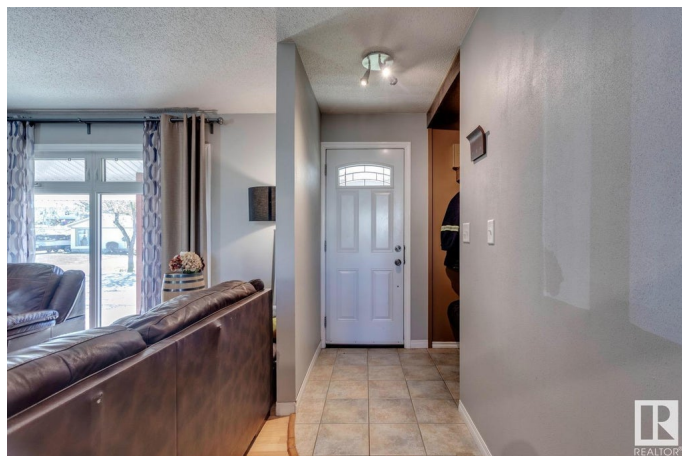
Lacombe Park, St. Albert, AB

Welcome to this inviting bungalow in the heart of Lacombe Park, backing directly onto Ronald Harvey Elementary School—offering the ultimate in family-friendly convenience. With 3 bedrooms and 1.5 bathrooms on the main floor, plus a fully finished basement featuring an additional bedroom and full bath, this home offers a spacious and functional layout for everyday living. The open-concept main floor is perfect for both relaxing and entertaining, while the oversized heated tandem garage provides ample space for vehicles, storage, or a workshop. Located just steps from beautiful parks, walking trails, and shopping, with quick access to all the amenities St. Albert has to offer. Key updates include windows (2012), roof (2011), furnace (2017), and a brand-new hot water tank (2025).

Built in 1972

Essential Information

| | |
|----------------|-----------|
| MLS® # | E4435361 |
| Price | \$435,000 |
| Bedrooms | 4 |
| Bathrooms | 2.50 |
| Full Baths | 2 |
| Half Baths | 1 |
| Square Footage | 1,228 |
| Acres | 0.00 |



| | |
|------------|------------------------|
| Year Built | 1972 |
| Type | Single Family |
| Sub-Type | Detached Single Family |
| Style | Bungalow |
| Status | Active |

Community Information

| | |
|-------------|--------------|
| Address | 2 Leon Place |
| Area | St. Albert |
| Subdivision | Lacombe Park |
| City | St. Albert |
| County | ALBERTA |
| Province | AB |
| Postal Code | T8N 1X6 |

Amenities

| | |
|-----------|----------------------------------|
| Amenities | Air Conditioner, No Smoking Home |
| Parking | Double Garage Attached, Tandem |

Interior

| | |
|-------------------|---|
| Interior Features | ensuite bathroom |
| Appliances | Air Conditioning-Central, Dishwasher-Built-In, Dryer, Garage Control, Garage Opener, Microwave Hood Fan, Refrigerator, Stove-Electric, Washer |
| Heating | Forced Air-1, Natural Gas |
| Stories | 2 |
| Has Basement | Yes |
| Basement | Full, Finished |

Exterior

| | |
|-------------------|---|
| Exterior | Wood, Vinyl |
| Exterior Features | Backs Onto Park/Trees, Picnic Area, Playground Nearby, Schools, Shopping Nearby |
| Roof | Asphalt Shingles |
| Construction | Wood, Vinyl |
| Foundation | Concrete Perimeter |

Additional Information

| | |
|----------------|---------------|
| Date Listed | May 8th, 2025 |
| Days on Market | 15 |

Zoning

Zone 24

DATA IS DEEMED RELIABLE BUT IS NOT GUARANTEED ACCURATE BY THE REALTORS® ASSOCIATION OF EDMONTON. COPYRIGHT 2025 BY THE REALTORS® ASSOCIATION OF EDMONTON. ALL RIGHTS RESERVED. Trademarks are owned or controlled by the Canadian Real Estate Association (CREA) and identify real estate professionals who are members of CREA (REALTOR®, REALTORS®) and/or the quality of services they provide (MLS®, Multiple Listing Service®)

Listing information last updated on May 23rd, 2025 at 4:02am MDT