

\$97,900 - 108 10730 112 Street, Edmonton

MLS® #E4436791

\$97,900

1 Bedroom, 1.00 Bathroom, 693 sqft

Condo / Townhouse on 0.00 Acres

Queen Mary Park, Edmonton, AB

This Beautifully RENOVATED main floor apartment features Large living room with balcony, One large Bedroom with new flooring, Beautiful kitchen with NEW countertops and new fridge, storage room & a full bathroom. Convenient location - Only minutes to Grant MacEwan University, Victoria high, public transportation, Kingsway shopping centre and all amenities.

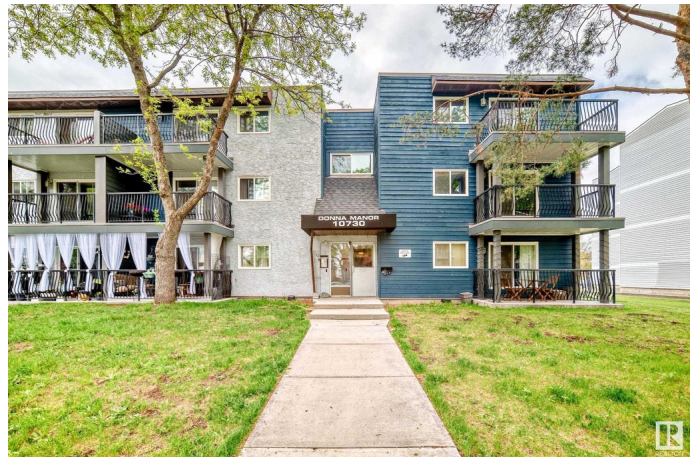
Built in 1981

Essential Information

MLS® #	E4436791
Price	\$97,900
Bedrooms	1
Bathrooms	1.00
Full Baths	1
Square Footage	693
Acres	0.00
Year Built	1981
Type	Condo / Townhouse
Sub-Type	Lowrise Apartment
Style	Single Level Apartment
Status	Active

Community Information

Address	108 10730 112 Street
Area	Edmonton



Subdivision	Queen Mary Park
City	Edmonton
County	ALBERTA
Province	AB
Postal Code	T5H 3H1

Amenities

Amenities	On Street Parking, Detectors Smoke
Parking	Stall

Interior

Appliances	Dishwasher-Built-In, Hood Fan, Refrigerator, Stove-Electric
Heating	Baseboard, Water
# of Stories	3
Stories	3
Has Basement	Yes
Basement	None, No Basement

Exterior

Exterior	Wood, Stucco
Exterior Features	Landscaped, Public Transportation, Schools, Shopping Nearby
Roof	Asphalt Shingles
Construction	Wood, Stucco
Foundation	Concrete Perimeter

Additional Information

Date Listed	May 15th, 2025
Days on Market	37
Zoning	Zone 08
Condo Fee	\$456

DATA IS DEEMED RELIABLE BUT IS NOT GUARANTEED ACCURATE BY THE REALTORS® ASSOCIATION OF EDMONTON. COPYRIGHT 2025 BY THE REALTORS® ASSOCIATION OF EDMONTON. ALL RIGHTS RESERVED. Trademarks are owned or controlled by the Canadian Real Estate Association (CREA) and identify real estate professionals who are members of CREA (REALTOR®, REALTORS®) and/or the quality of services they provide (MLS®, Multiple Listing Service®)

Listing information last updated on June 21st, 2025 at 1:32pm MDT