

\$225,000 - 315 2504 109 Street, Edmonton

MLS® #E4438492

\$225,000

1 Bedroom, 1.00 Bathroom, 748 sqft

Condo / Townhouse on 0.00 Acres

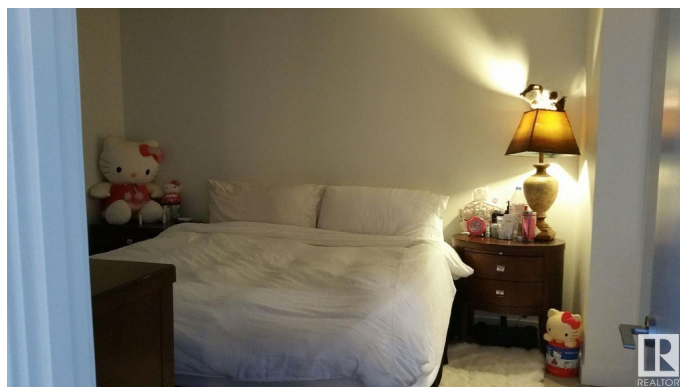
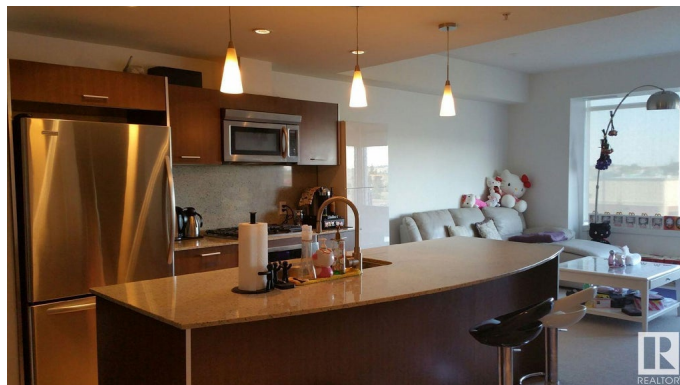
Ermineskin, Edmonton, AB

ONE CENTURY PARK, this upscale executive condo is located in southwest Edmonton in the community of Ermineskin. This 3th floor 748 sq.ft one bedroom plus den and one bath. The complex is located within walking distance to the LRT and minutes to the South Edmonton Common. This condo features 9 foot ceilings, carpets in living room, marble flooring in entry way and kitchen, granite counter-tops, granite surround for the fireplace, private balcony with BBQ gas hook-up and window coverings. The condo also includes a KitchenAid Appliances package consisting of Counter-Top Gas Stove, Built-In Oven, Built-In Microwave, Built-In Dishwasher, Refrigerator, Stack Washer and Dryer. Amenities includes an exercise room, secure and heated underground parking and visitors parking, underground heated storage. Be the few to call Century Park home. Make Century Park living a part of your lifestyle choice. Condo fees includes all utilities.

Built in 2008

Essential Information

MLS® #	E4438492
Price	\$225,000
Bedrooms	1
Bathrooms	1.00
Full Baths	1



Square Footage	748
Acres	0.00
Year Built	2008
Type	Condo / Townhouse
Sub-Type	Apartment High Rise
Style	Single Level Apartment
Status	Active

Community Information

Address	315 2504 109 Street
Area	Edmonton
Subdivision	Ermineskin
City	Edmonton
County	ALBERTA
Province	AB
Postal Code	T6J 3T1

Amenities

Amenities	No Animal Home, No Smoking Home, Parking-Visitor, Secured Parking, Security Door, Storage Cage
Parking	Heated, Parkade, Underground

Interior

Appliances	Air Conditioning-Central, Dishwasher-Built-In, Garage Control, Garburator, Hood Fan, Oven-Built-In, Oven-Microwave, Refrigerator, Stacked Washer/Dryer, Stove-Countertop Gas, Window Coverings
Heating	Heat Pump, Natural Gas
# of Stories	7
Stories	1
Has Basement	Yes
Basement	None, No Basement

Exterior

Exterior	Concrete, Brick, Metal
Exterior Features	Airport Nearby, Flat Site, Golf Nearby, Landscaped, Low Maintenance Landscape, Playground Nearby, Public Transportation, Schools, Shopping Nearby, Ski Hill Nearby
Roof	Tar & Gravel
Construction	Concrete, Brick, Metal
Foundation	Concrete Perimeter

Additional Information

Date Listed	May 23rd, 2025
Days on Market	117
Zoning	Zone 16
Condo Fee	\$681

DATA IS DEEMED RELIABLE BUT IS NOT GUARANTEED ACCURATE BY THE REALTORS® ASSOCIATION OF EDMONTON. COPYRIGHT 2025 BY THE REALTORS® ASSOCIATION OF EDMONTON. ALL RIGHTS RESERVED.Trademarks are owned or controlled by the Canadian Real Estate Association (CREA) and identify real estate professionals who are members of CREA (REALTOR®, REALTORS®) and/or the quality of services they provide (MLS®, Multiple Listing Service®)

Listing information last updated on September 17th, 2025 at 7:17pm MDT