

## \$549,900 - 3565 Cherry Landing Landing, Edmonton

MLS® #E4438712

**\$549,900**

3 Bedroom, 2.50 Bathroom, 1,779 sqft

Single Family on 0.00 Acres

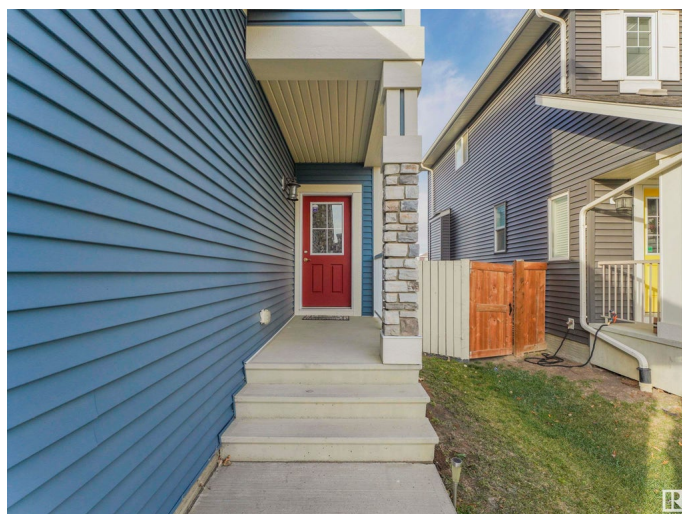
The Orchards At Ellerslie, Edmonton, AB

This charming two-story home with a double-attached garage features three bedrooms plus a bonus room and boasts fantastic finishes and a smart, efficient layout. Well maintained, this turnkey home offers an exceptional opportunity to live in the highly desirable community of The Orchards at Ellerslie. The home includes upgraded laminate flooring, stylish countertops, a fireplace, landscaped yard, deck, fenced backyard, and stainless steel appliances. The spacious open-concept main floor features a mudroom, while the upper level includes three generous bedrooms, a bonus room, a laundry room, and a luxurious 5-piece ensuite with a walk-through closet in the primary bedroom. The unfinished basement offers great potential for customization, allowing you to add value. Conveniently located near all amenities, this home is an excellent value for growing families.

Built in 2015

### Essential Information

|            |           |
|------------|-----------|
| MLS® #     | E4438712  |
| Price      | \$549,900 |
| Bedrooms   | 3         |
| Bathrooms  | 2.50      |
| Full Baths | 2         |



|                |                        |
|----------------|------------------------|
| Half Baths     | 1                      |
| Square Footage | 1,779                  |
| Acres          | 0.00                   |
| Year Built     | 2015                   |
| Type           | Single Family          |
| Sub-Type       | Detached Single Family |
| Style          | 2 Storey               |
| Status         | Active                 |

### **Community Information**

|             |                             |
|-------------|-----------------------------|
| Address     | 3565 Cherry Landing Landing |
| Area        | Edmonton                    |
| Subdivision | The Orchards At Ellerslie   |
| City        | Edmonton                    |
| County      | ALBERTA                     |
| Province    | AB                          |
| Postal Code | T6X 2B5                     |

### **Amenities**

|           |                        |
|-----------|------------------------|
| Amenities | Ceiling 9 ft.          |
| Parking   | Double Garage Attached |

### **Interior**

|                   |  |
|-------------------|--|
| Interior Features | ensuite bathroom   |
| Appliances        | Dishwasher-Built-In, Dryer, Hood Fan, Refrigerator, Washer |
| Heating           | Forced Air-1, Natural Gas                                  |
| Stories           | 2  |
| Has Basement      | Yes  |
| Basement          | Full, Unfinished   |

### **Exterior**

|                   |  |
|-------------------|--|
| Exterior          | Wood, Stone, Vinyl                     |
| Exterior Features | Park/Reserve, Schools, Shopping Nearby |
| Roof              | Asphalt Shingles                       |
| Construction      | Wood, Stone, Vinyl                     |
| Foundation        | Concrete Perimeter                     |

### **Additional Information**

|             |                |
|-------------|----------------|
| Date Listed | May 26th, 2025 |
|-------------|----------------|

|                |          |
|----------------|----------|
| Days on Market | 90       |
| Zoning         | Zone 53  |
| HOA Fees       | 450      |
| HOA Fees Freq. | Annually |

DATA IS DEEMED RELIABLE BUT IS NOT GUARANTEED ACCURATE BY THE REALTORS® ASSOCIATION OF EDMONTON. COPYRIGHT 2025 BY THE REALTORS® ASSOCIATION OF EDMONTON. ALL RIGHTS RESERVED. Trademarks are owned or controlled by the Canadian Real Estate Association (CREA) and identify real estate professionals who are members of CREA (REALTOR®, REALTORS®) and/or the quality of services they provide (MLS®, Multiple Listing Service®)

Listing information last updated on August 24th, 2025 at 4:02pm MDT