

\$269,900 - 102 Primrose Gardens Gardens, Edmonton

MLS® #E4440696

\$269,900

3 Bedroom, 1.50 Bathroom, 1,093 sqft

Condo / Townhouse on 0.00 Acres

Aldergrove, Edmonton, AB

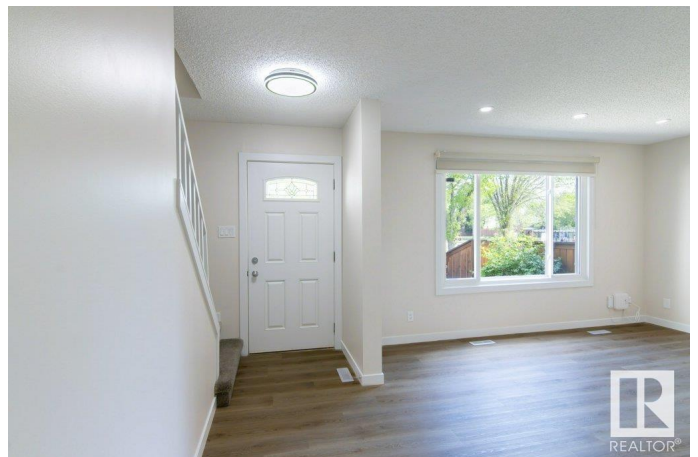
PREMIUM TOWNHOME! Beautifully renovated throughout, this stylish & affordable home is perfect for first time buyers or investors. Located in the desirable west end community of Aldergrove, Primrose Gardens is an efficiently run, well managed complex with **LOW CONDO FEES**. Some of the many upgrades include gorgeous new flooring, designer lighting, fresh paint & a stunning new kitchen with contemporary 2-tone cabinetry, subway tile backsplash & quality s/s appliances. The open design concept has a bright & sunny living room with a huge picture window allowing plenty of natural light, a custom chef's kitchen & 2 pce bath. Upstairs has 3 generous bedrooms and a full family bathroom with all new fixtures and fittings. The basement offers lots more living space with a huge recreation room, den and laundry area. The attractive exterior has a fully fenced yard **OVERLOOKING GREENSPACE!** Close to everything the vibrant West End has to offer, excellent restaurants, major shopping (WEM), YMCA, parks & great schools!

Built in 1973

Essential Information

MLS® # E4440696

Price \$269,900



Bedrooms	3
Bathrooms	1.50
Full Baths	1
Half Baths	1
Square Footage	1,093
Acres	0.00
Year Built	1973
Type	Condo / Townhouse
Sub-Type	Townhouse
Style	2 Storey
Status	Active

Community Information

Address	102 Primrose Gardens Gardens
Area	Edmonton
Subdivision	Aldergrove
City	Edmonton
County	ALBERTA
Province	AB
Postal Code	T5T 0R1

Amenities

Amenities	Detectors Smoke, No Animal Home, No Smoking Home, Patio, See Remarks
Parking	Stall

Interior

Appliances	Dishwasher-Built-In, Dryer, Microwave Hood Fan, Refrigerator, Stove-Electric, Washer
Heating	Forced Air-1, Natural Gas
Stories	3
Has Basement	Yes
Basement	Full, Finished

Exterior

Exterior	Wood, Stucco
Exterior Features	Fenced, Playground Nearby, Public Swimming Pool, Public Transportation, Schools, Shopping Nearby
Roof	Asphalt Shingles

Construction	Wood, Stucco
Foundation	Concrete Perimeter

Additional Information

Date Listed	June 5th, 2025
Days on Market	21
Zoning	Zone 20
Condo Fee	\$335

DATA IS DEEMED RELIABLE BUT IS NOT GUARANTEED ACCURATE BY THE REALTORS® ASSOCIATION OF EDMONTON. COPYRIGHT 2025 BY THE REALTORS® ASSOCIATION OF EDMONTON. ALL RIGHTS RESERVED.Trademarks are owned or controlled by the Canadian Real Estate Association (CREA) and identify real estate professionals who are members of CREA (REALTOR®, REALTORS®) and/or the quality of services they provide (MLS®, Multiple Listing Service®)

Listing information last updated on June 26th, 2025 at 9:03am MDT