

\$598,707 - 145 Sumac Lane, Sherwood Park

MLS® #E4441709

\$598,707

4 Bedroom, 3.50 Bathroom, 1,680 sqft

Single Family on 0.00 Acres

Summerwood, Sherwood Park, AB

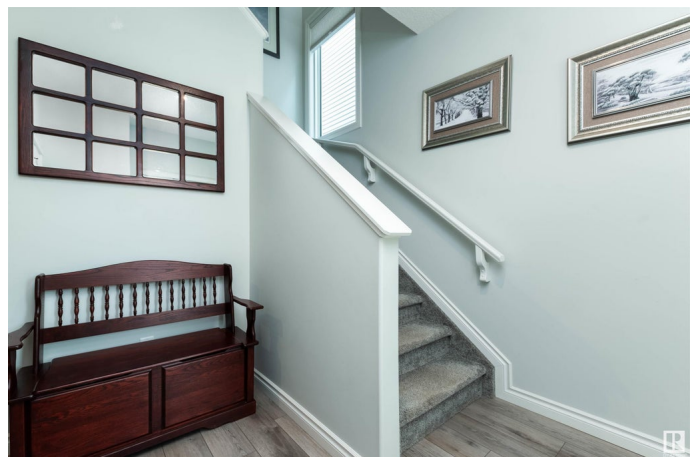
BEAUTY IN SUMMERWOOD!!! This fabulous 2 storey home is built by Pacesetter & offers many attractive features throughout! Modern design with a generous entry way, vinyl plank flooring & a STUNNING KITCHEN!! High end finishings with gorgeous Quartz countertops, stainless steel appliances, large island, walk-through pantry & a big dining area. Open & bright living room. Walk out to the BEAUTIFUL & PRIVATE BACKYARD! Featuring a covered deck, greenhouse & second deck plus garden boxes & shed. Upstairs are 3 bedrooms, 4 piece bathroom, laundry room & bonus area. GORGEOUS 5 piece ensuite & walk-in closet in Primary Bedroom. The basement offers a 4th bedroom, 3 piece bathroom, wine-making room, utility room & tons of storage space! HEATED DOUBLE GARAGE with epoxy flooring plus storage in the mezzanine! WATER SOFTENER & CENTRAL AIR-CONDITIONING too! Close to parks, trails, shopping & more! Incredible value in one of Sherwood Park's most desirable family communities! Visit REALTOR® website for more information.

Built in 2021

Essential Information

MLS® #

E4441709



Price	\$598,707
Bedrooms	4
Bathrooms	3.50
Full Baths	3
Half Baths	1
Square Footage	1,680
Acres	0.00
Year Built	2021
Type	Single Family
Sub-Type	Detached Single Family
Style	2 Storey
Status	Active

Community Information

Address	145 Sumac Lane
Area	Sherwood Park
Subdivision	Summerwood
City	Sherwood Park
County	ALBERTA
Province	AB
Postal Code	T8H 1Z9

Amenities

Amenities	Air Conditioner, Deck
Parking	Double Garage Attached, Heated

Interior

Interior Features	ensuite bathroom
Appliances	Air Conditioning-Central, Dishwasher-Built-In, Dryer, Garage Control, Garage Opener, Hood Fan, Refrigerator, Storage Shed, Stove-Electric, Washer, Water Softener, TV Wall Mount, Garage Heater
Heating	Forced Air-1, Natural Gas
Stories	3
Has Basement	Yes
Basement	Full, Partially Finished

Exterior

Exterior	Wood, Stone, Vinyl
Exterior Features	Fenced, Flat Site, Landscaped, Playground Nearby, Private Setting,

Public Transportation, Schools, Shopping Nearby

Roof	Asphalt Shingles
Construction	Wood, Stone, Vinyl
Foundation	Concrete Perimeter

Additional Information

Date Listed	June 11th, 2025
Days on Market	13
Zoning	Zone 25

DATA IS DEEMED RELIABLE BUT IS NOT GUARANTEED ACCURATE BY THE REALTORS® ASSOCIATION OF EDMONTON. COPYRIGHT 2025 BY THE REALTORS® ASSOCIATION OF EDMONTON. ALL RIGHTS RESERVED.Trademarks are owned or controlled by the Canadian Real Estate Association (CREA) and identify real estate professionals who are members of CREA (REALTOR®, REALTORS®) and/or the quality of services they provide (MLS®, Multiple Listing Service®)

Listing information last updated on June 23rd, 2025 at 10:02pm MDT