

\$1,280,000 - 10403 10407 144 Street, Edmonton

MLS® #E4442528

\$1,280,000

0 Bedroom, 0.00 Bathroom,
Land Commercial on 0.00 Acres

Grovenor, Edmonton, AB

In Grovenor, close to all new amenities and Glenora. Fantastic location facing Grovenor Community League Centre and Parks. Frontage 111 ft x 144.8 ft depth. Perfect parcel for several more single lots or multi-plex and laneway developments. Corner parcel 0.369 Acre in total, with side street and back alley access. 10403: 958 sf bungalow with 2 bedrooms, 1 full bath and partially finished basement. 10407: 958 sf bungalow with 3 bedrooms, 2 full baths, finished basement and single detached garage. Great cash flow and tenants pay utilities. Both houses with long term tenants. Perfect neighborhood. Convenient for commute. Both lots are to be sold together. Serious inquiries only.

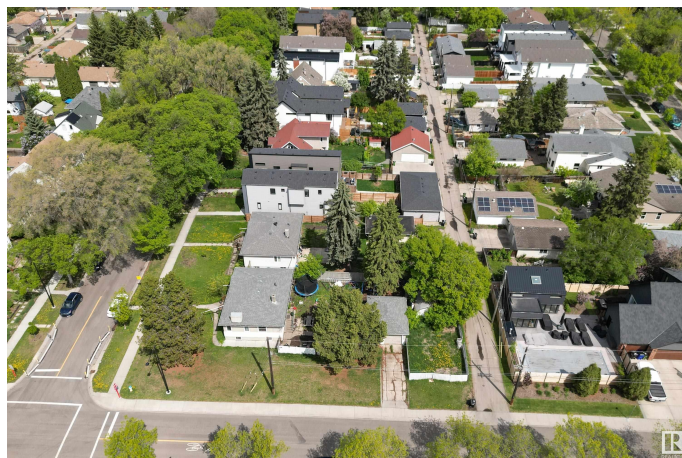
Built in 1950

Essential Information

MLS® #	E4442528
Price	\$1,280,000
Bathrooms	0.00
Acres	0.00
Year Built	1950
Type	Land Commercial
Status	Active

Community Information

Address 10403 10407 144 Street



Area	Edmonton
Subdivision	Grovenor
City	Edmonton
County	ALBERTA
Province	AB
Postal Code	T5N 2V5

Exterior

Exterior	Stucco, Wood, Wood Frame
Roof	Asphalt Shingles
Construction	Stucco, Wood, Wood Frame

Additional Information

Date Listed	June 12th, 2025
Days on Market	8
Zoning	Zone 21

DATA IS DEEMED RELIABLE BUT IS NOT GUARANTEED ACCURATE BY THE REALTORS® ASSOCIATION OF EDMONTON. COPYRIGHT 2025 BY THE REALTORS® ASSOCIATION OF EDMONTON. ALL RIGHTS RESERVED. Trademarks are owned or controlled by the Canadian Real Estate Association (CREA) and identify real estate professionals who are members of CREA (REALTOR®, REALTORS®) and/or the quality of services they provide (MLS®, Multiple Listing Service®)

Listing information last updated on June 20th, 2025 at 7:32pm MDT