

\$120,000 - 302 2628 Mill Woods, Edmonton

MLS® #E4443046

\$120,000

2 Bedroom, 1.00 Bathroom, 877 sqft
Condo / Townhouse on 0.00 Acres

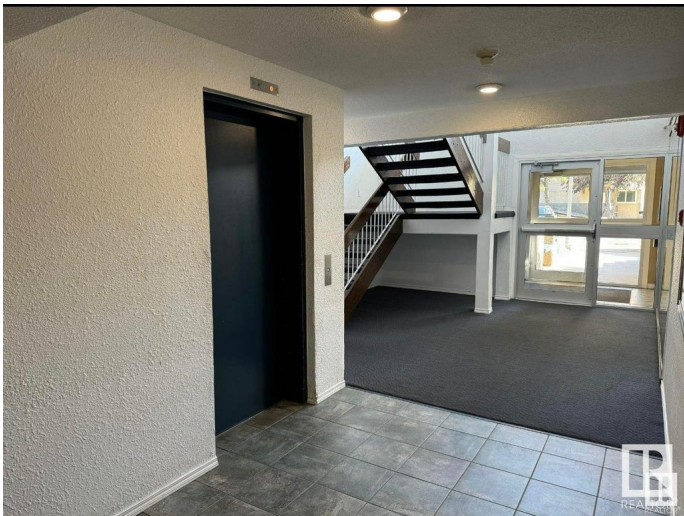
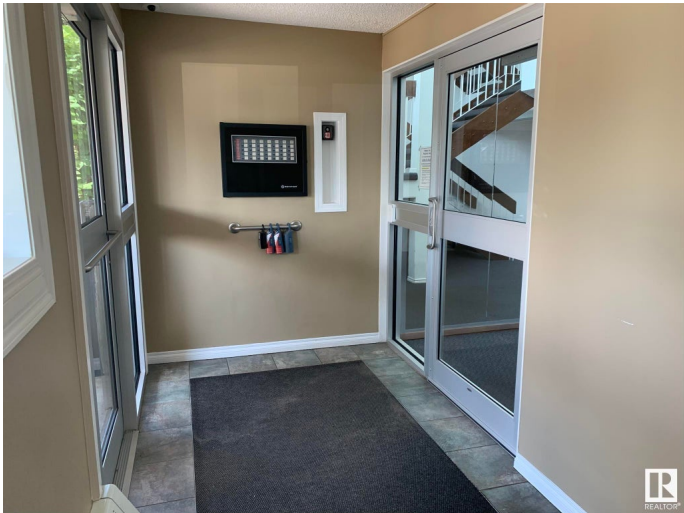
Weinlos, Edmonton, AB

Spacious 2-Bedroom Condo in Prime Millwoods Location! This bright and well maintained third-floor unit at Millwoods Place offers a spacious layout with two large bedrooms, one full bathroom, and a parking stall. Previously renovated, the unit is in great condition and ready for new owners. The building is managed by a reliable property management company. Enjoy a walkable neighborhood with close proximity to banks, shopping plazas, schools, and easy access to Anthony Henday Drive and Whitemud Freeway.

Built in 1981

Essential Information

MLS® #	E4443046
Price	\$120,000
Bedrooms	2
Bathrooms	1.00
Full Baths	1
Square Footage	877
Acres	0.00
Year Built	1981
Type	Condo / Townhouse
Sub-Type	Lowrise Apartment
Style	Single Level Apartment
Status	Active



Community Information

Address	302 2628 Mill Woods
Area	Edmonton
Subdivision	Weinlos
City	Edmonton
County	ALBERTA
Province	AB
Postal Code	T6L 5K8

Amenities

Amenities	Intercom
Parking	Stall

Interior

Appliances	Refrigerator-Energy Star, Stove-Electric
Heating	Baseboard, Natural Gas, Water
# of Stories	4
Stories	4
Has Basement	Yes
Basement	None, No Basement

Exterior

Exterior	Wood, Vinyl
Exterior Features	Picnic Area, Playground Nearby, Public Transportation, Schools, Shopping Nearby
Roof	Asphalt Shingles
Construction	Wood, Vinyl
Foundation	Concrete Perimeter

Additional Information

Date Listed	June 18th, 2025
Days on Market	19
Zoning	Zone 29
Condo Fee	\$510

DATA IS DEEMED RELIABLE BUT IS NOT GUARANTEED ACCURATE BY THE REALTORS® ASSOCIATION OF EDMONTON. COPYRIGHT 2025 BY THE REALTORS® ASSOCIATION OF EDMONTON. ALL RIGHTS RESERVED.Trademarks are owned or controlled by the Canadian Real Estate Association (CREA) and identify real estate professionals who are members of CREA (REALTOR®, REALTORS®) and/or the quality of services they provide (MLS®, Multiple Listing Service®)

Listing information last updated on July 7th, 2025 at 12:17am MDT