

Courtesy Of . Prabhjot Kaur Of MaxWell Polaris

\$554,900 - 26 Norwyck Way, Spruce Grove

MLS® #E4443132

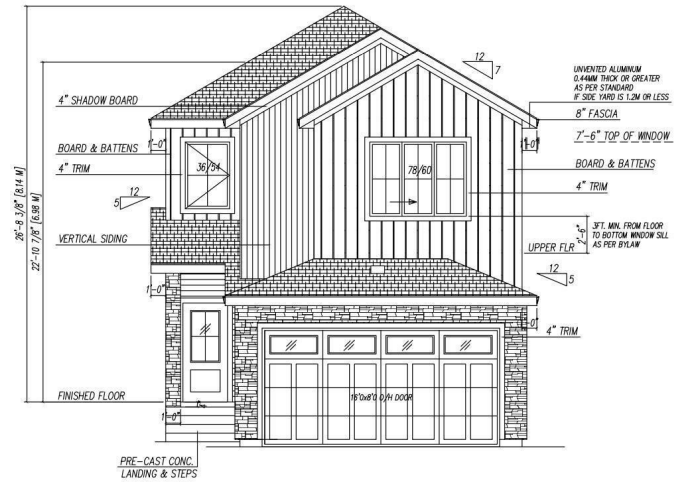
\$554,900

4 Bedroom, 3.00 Bathroom, 1,900 sqft

Single Family on 0.00 Acres

Fenwyck, Spruce Grove, AB

Welcome to this beautifully upgraded home in the heart of Spruce Grove! This spacious and modern property features an open-to-below concept with high ceilings and premium finishes throughout. The main floor offers full bedroom and full bathroom, perfect for guests. Upstairs, youâ€™ll find master bedroom with 5pc ensuite another 2 perfect sized bedrooms, full 4 pc bath, a large bonus room, and plenty of natural light. Enjoy the added value of a SEPERATE SIDE ENTRANCE to basement, ideal for future development or rental potential. ALL APPLIANCES and WINDOW BLINDS are also included, making this a truly move-in ready home. Located close to schools, parks, shopping, and other amenities â€“ this is the perfect place to call home.



Built in 2025

Essential Information

MLS® #	E4443132
Price	\$554,900
Bedrooms	4
Bathrooms	3.00
Full Baths	3
Square Footage	1,900
Acres	0.00
Year Built	2025

Type	Single Family
Sub-Type	Detached Single Family
Style	2 Storey
Status	Active

Community Information

Address	26 Norwyck Way
Area	Spruce Grove
Subdivision	Fenwyck
City	Spruce Grove
County	ALBERTA
Province	AB
Postal Code	T7X 1Y1

Amenities

Amenities	Ceiling 9 ft., Closet Organizer
Parking	Double Garage Attached

Interior

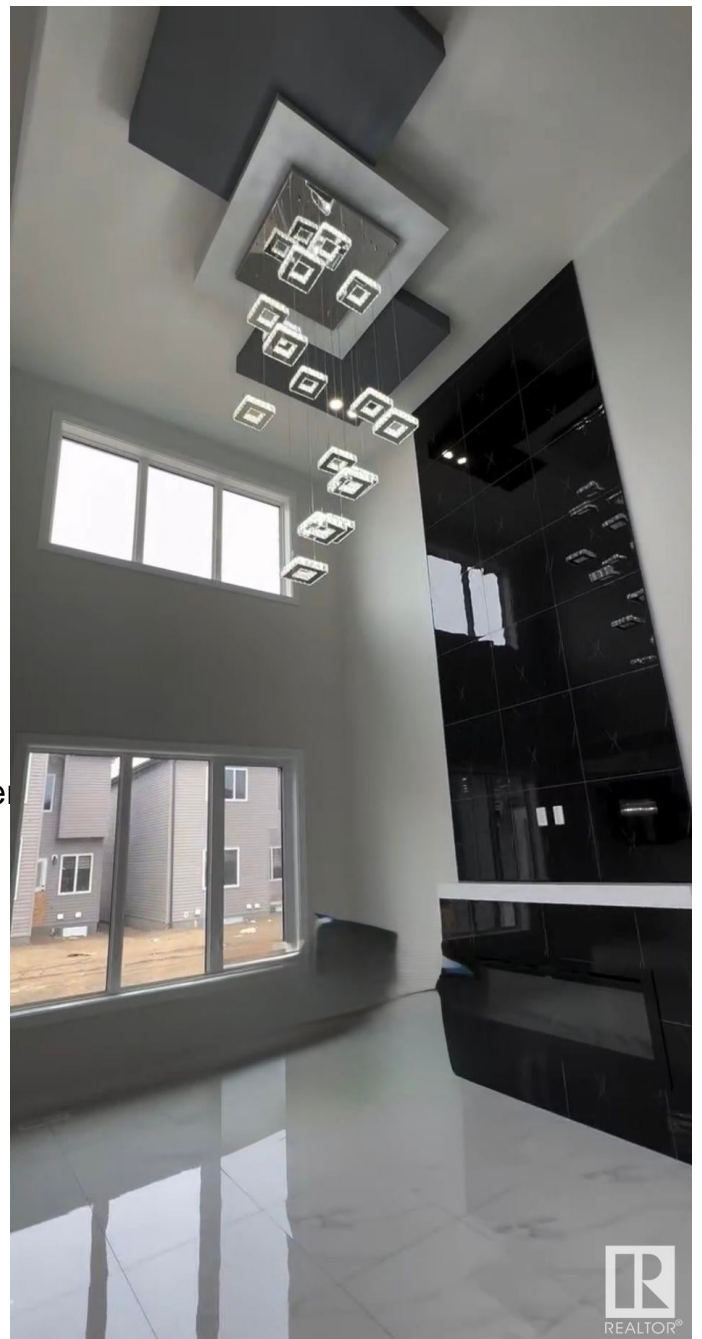
Interior Features	ensuite bathroom
Appliances	Dishwasher-Built-In, Dryer, Stove-Gas, Washer
Heating	Forced Air-1, Natural Gas
Fireplace	Yes
Fireplaces	Tile Surround
Stories	2
Has Basement	Yes
Basement	Full, Unfinished

Exterior

Exterior	Wood, Vinyl
Exterior Features	Playground Nearby, Schools, Shopping Nearby
Roof	Asphalt Shingles
Construction	Wood, Vinyl
Foundation	Concrete Perimeter

Additional Information

Date Listed	June 19th, 2025
Days on Market	16



Zoning

Zone 91



DATA IS DEEMED RELIABLE BUT IS NOT GUARANTEED ACCURATE BY THE REALTORS® ASSOCIATION OF EDMONTON. COPYRIGHT 2025 BY THE REALTORS® ASSOCIATION OF EDMONTON. ALL RIGHTS RESERVED. Trademarks are owned or controlled by the Canadian Real Estate Association (CREA) and identify real estate professionals who are members of CREA (REALTOR®, REALTORS®) and/or the quality of services they provide (MLS®, Multiple Listing Service®)

Listing information last updated on July 5th, 2025 at 5:02am MDT