

\$399,900 - 1081 Cy Becker Road, Edmonton

MLS® #E4443148

\$399,900

2 Bedroom, 2.50 Bathroom, 1,311 sqft

Single Family on 0.00 Acres

Cy Becker, Edmonton, AB

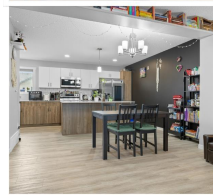
Have you been looking for your own home at a great value, close to parks, shopping, with all you could ask for without NO CONDO FEES?! Welcome to this beautiful 1311 SQFT END UNIT townhome with double attached garage in the heart of CY Becker! Make your way through the front door into your entrance with access to the garage & super cool hidden shoe storage under the stairs! Up to your main living space with HUGE chef's kitchen & large island with quartz counters, which flows into your open concept living & dining spaces. Off of your living room, which is complete with electric fireplace & custom ceiling bookcase, you will find your spacious balcony that has enough room to entertain family & friends & still BBQ! On your top level you will find the laundry room (no hauling laundry up & down here!) along with DUAL SPACIOUS PRIMARY BEDROOMS, each complete with their own ensuite & walk-in closet! Easy access to the Henday, close to, shopping, parks & schools, makes this home a great find! Welcome home!!!

Built in 2021

Essential Information

MLS® # E4443148

Price \$399,900



Bedrooms	2
Bathrooms	2.50
Full Baths	2
Half Baths	1
Square Footage	1,311
Acres	0.00
Year Built	2021
Type	Single Family
Sub-Type	Residential Attached
Style	2 Storey
Status	Active

Community Information

Address	1081 Cy Becker Road
Area	Edmonton
Subdivision	Cy Becker
City	Edmonton
County	ALBERTA
Province	AB
Postal Code	T5Y 4B7

Amenities

Amenities	Deck
Parking Spaces	2
Parking	Double Garage Attached

Interior

Interior Features	ensuite bathroom
Appliances	Dishwasher-Built-In, Dryer, Microwave Hood Fan, Refrigerator, Stove-Electric, Washer, See Remarks
Heating	Forced Air-1, Natural Gas
Fireplace	Yes
Fireplaces	Insert
Stories	3
Has Basement	Yes
Basement	None, See Remarks

Exterior

Exterior	Wood, Vinyl
----------	-------------

Exterior Features	Fenced, Landscaped, Low Maintenance Landscape, Playground Nearby, Public Transportation, Schools
Roof	Asphalt Shingles
Construction	Wood, Vinyl
Foundation	Concrete Perimeter

Additional Information

Date Listed	June 19th, 2025
Days on Market	2
Zoning	Zone 03

DATA IS DEEMED RELIABLE BUT IS NOT GUARANTEED ACCURATE BY THE REALTORS® ASSOCIATION OF EDMONTON. COPYRIGHT 2025 BY THE REALTORS® ASSOCIATION OF EDMONTON. ALL RIGHTS RESERVED.Trademarks are owned or controlled by the Canadian Real Estate Association (CREA) and identify real estate professionals who are members of CREA (REALTOR®, REALTORS®) and/or the quality of services they provide (MLS®, Multiple Listing Service®)

Listing information last updated on June 21st, 2025 at 2:32am MDT