

\$359,900 - 10912 155 Street, Edmonton

MLS® #E4444368

\$359,900

3 Bedroom, 2.00 Bathroom, 1,041 sqft

Single Family on 0.00 Acres

High Park (Edmonton), Edmonton, AB

CALLING ALL DEVELOPERS....High Park is experiencing a lot of new residential development and here's an excellent infill opportunity for you! Rectangular 687m2 (49.87 ft x 147.9 ft) lot just down the street from High Park Playground. Being sold AS IS WHERE IS and lot value only.

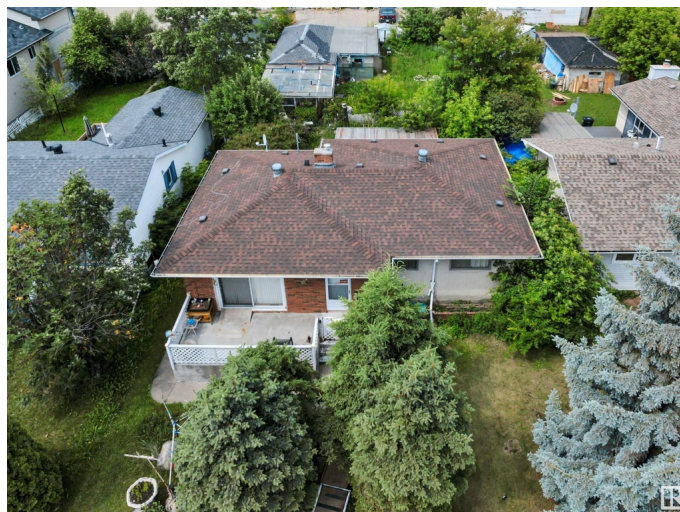
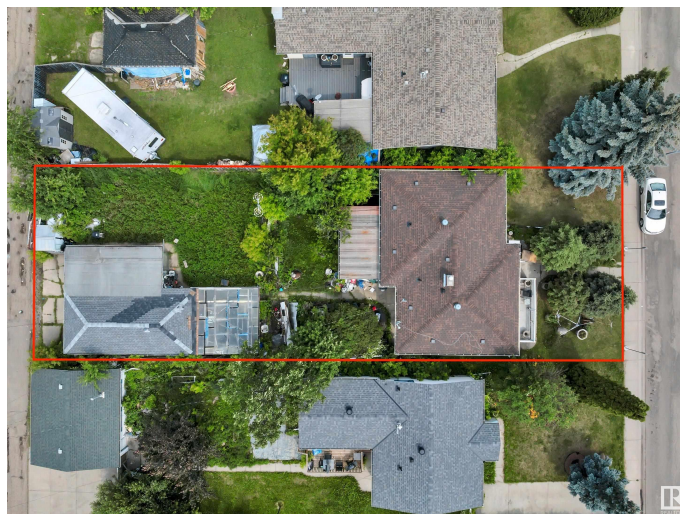
Built in 1958

Essential Information

MLS® #	E4444368
Price	\$359,900
Bedrooms	3
Bathrooms	2.00
Full Baths	2
Square Footage	1,041
Acres	0.00
Year Built	1958
Type	Single Family
Sub-Type	Detached Single Family
Style	Bungalow
Status	Active

Community Information

Address	10912 155 Street
Area	Edmonton
Subdivision	High Park (Edmonton)



City	Edmonton
County	ALBERTA
Province	AB
Postal Code	T5P 2N1

Amenities

Amenities	Infill Property
Parking	Double Garage Detached

Interior

Appliances	Dryer, Freezer, Washer, Refrigerators-Two, Stoves-Two
Heating	Forced Air-1, Natural Gas
Stories	2
Has Basement	Yes
Basement	Full, Finished

Exterior

Exterior	Wood, Brick
Exterior Features	Back Lane, Flat Site, Public Transportation, Schools, Shopping Nearby
Roof	Asphalt Shingles
Construction	Wood, Brick
Foundation	Concrete Perimeter

Additional Information

Date Listed	June 26th, 2025
Days on Market	5
Zoning	Zone 21

DATA IS DEEMED RELIABLE BUT IS NOT GUARANTEED ACCURATE BY THE REALTORS® ASSOCIATION OF EDMONTON. COPYRIGHT 2025 BY THE REALTORS® ASSOCIATION OF EDMONTON. ALL RIGHTS RESERVED. Trademarks are owned or controlled by the Canadian Real Estate Association (CREA) and identify real estate professionals who are members of CREA (REALTOR®, REALTORS®) and/or the quality of services they provide (MLS®, Multiple Listing Service®)

Listing information last updated on July 1st, 2025 at 6:32pm MDT