

## \$449,900 - 5116 58 Avenue, Tofield

MLS® #E4444795

**\$449,900**

5 Bedroom, 2.00 Bathroom, 1,720 sqft  
Single Family on 0.00 Acres

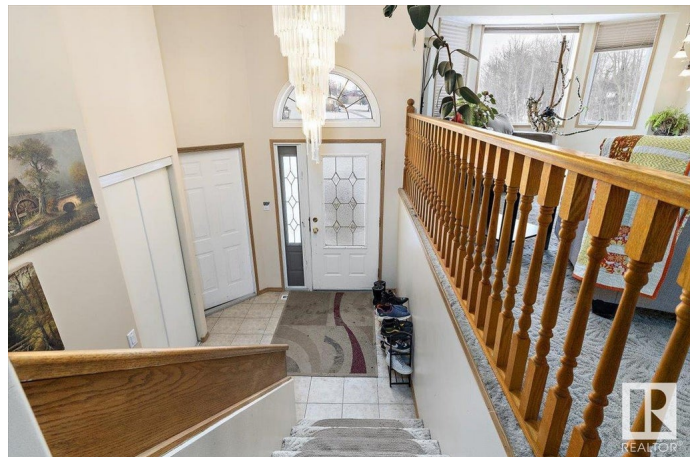
Tofield, Tofield, AB

A rare find!!! 1700 sq/ft bilevel with double attached garage on 1.98 acres in the charming community of Tofield! Land is subdividable and is zoned R-LD which would accomodate low density residential housing. Open concept design of living and dining area greets you upon entering this great family home. Kitchen features: white cabinetry, pantry, island, and access to west-facing deck. 3 generous size bedrooms and 5pc bathroom completes the main floor. Basement consists of family room with wet bar, 2 bedrooms, 4pc bathroom, and laundry room. Recent upgrades include basement flooring and painting. Huge yard is perfect for entertaining and large gatherings. Your own acreage within town limits! A must see !!!

Built in 1999

### Essential Information

MLS® #	E4444795
Price	\$449,900
Bedrooms	5
Bathrooms	2.00
Full Baths	2
Square Footage	1,720
Acres	0.00
Year Built	1999



Type	Single Family
Sub-Type	Detached Single Family
Style	Bi-Level
Status	Active

### Community Information

Address	5116 58 Avenue
Area	Tofield
Subdivision	Tofield
City	Tofield
County	ALBERTA
Province	AB
Postal Code	T0B 4J0

### Amenities

Amenities	Deck
Parking	Double Garage Attached

### Interior

Appliances	Dishwasher-Built-In, Garage Control, Garage Opener, Refrigerator, Storage Shed, Stove-Electric, Window Coverings
Heating	Forced Air-1, Natural Gas
Stories	2
Has Basement	Yes
Basement	Full, Finished

### Exterior

Exterior	Wood, Vinyl
Exterior Features	Flat Site, Private Setting, Schools, Subdividable Lot
Roof	Asphalt Shingles
Construction	Wood, Vinyl
Foundation	Concrete Perimeter

### School Information

Elementary	C.W.Sears Tofield (K-4)
Middle	Tofield (5-9)
High	Tofield

### Additional Information

Date Listed	June 27th, 2025
-------------	-----------------

Days on Market 5

Zoning Zone 80

DATA IS DEEMED RELIABLE BUT IS NOT GUARANTEED ACCURATE BY THE REALTORS® ASSOCIATION OF EDMONTON. COPYRIGHT 2025 BY THE REALTORS® ASSOCIATION OF EDMONTON. ALL RIGHTS RESERVED. Trademarks are owned or controlled by the Canadian Real Estate Association (CREA) and identify real estate professionals who are members of CREA (REALTOR®, REALTORS®) and/or the quality of services they provide (MLS®, Multiple Listing Service®)

Listing information last updated on July 2nd, 2025 at 3:02pm MDT