

Courtesy Of Jatinder Singh Of Initia Real Estate

## \$559,900 - 1491 Plum Circle Circle, Edmonton

MLS® #E4464584

**\$559,900**

4 Bedroom, 3.00 Bathroom, 1,961 sqft  
Single Family on 0.00 Acres

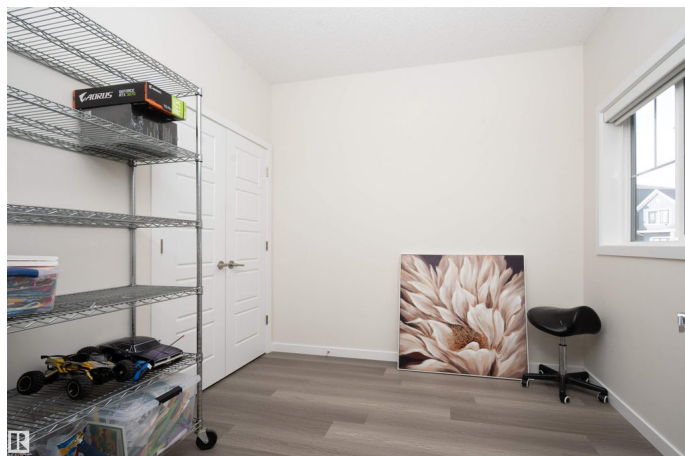
The Orchards At Ellerslie, Edmonton, AB

Welcome to this beautiful property located in the desirable community of ORCHARDS AT ELLERSLIE. This property offers total of 4 Bedrooms and 3 Full Bathrooms including Main Floor Bedroom and Full Bathroom. Main floor offers open concept with upgraded kitchen cabinets and spacious living and dining area. Upper Level comes with 3 Bedrooms, 2 Full Bathrooms and spacious Bonus area. Basement comes with the SEPERATE SIDE ENTRANCE and is waiting for your personal touch. This property comes with fully landscaped backyard and is backing on the walking trail. This property is located at a walking distance to the dog park. MUST SEE...

Built in 2022

### Essential Information

MLS® #	E4464584
Price	\$559,900
Bedrooms	4
Bathrooms	3.00
Full Baths	3
Square Footage	1,961
Acres	0.00
Year Built	2022
Type	Single Family



Sub-Type	Detached Single Family
Style	2 Storey
Status	Active

### Community Information

Address	1491 Plum Circle Circle
Area	Edmonton
Subdivision	The Orchards At Ellerslie
City	Edmonton
County	ALBERTA
Province	AB
Postal Code	T6X 3A7

### Amenities

Amenities	On Street Parking, Carbon Monoxide Detectors, Ceiling 9 ft., Deck, No Smoking Home, HRV System
Parking	Double Garage Attached

### Interior

Interior Features	ensuite bathroom
Appliances	Dishwasher-Built-In, Dryer, Garage Opener, Hood Fan, Refrigerator, Stove-Electric, Washer
Heating	Forced Air-1, Natural Gas
Stories	2
Has Basement	Yes
Basement	Full, Unfinished

### Exterior

Exterior	Wood, Stone, Vinyl
Exterior Features	Airport Nearby, Fenced, Landscaped, Playground Nearby, Schools, Shopping Nearby
Roof	Asphalt Shingles
Construction	Wood, Stone, Vinyl
Foundation	Concrete Perimeter

### Additional Information

Date Listed	November 3rd, 2025
Days on Market	10
Zoning	Zone 53
HOA Fees	450

HOA Fees Freq. Annually

DATA IS DEEMED RELIABLE BUT IS NOT GUARANTEED ACCURATE BY THE REALTORS® ASSOCIATION OF EDMONTON. COPYRIGHT 2025 BY THE REALTORS® ASSOCIATION OF EDMONTON. ALL RIGHTS RESERVED. Trademarks are owned or controlled by the Canadian Real Estate Association (CREA) and identify real estate professionals who are members of CREA (REALTOR®, REALTORS®) and/or the quality of services they provide (MLS®, Multiple Listing Service®)

Listing information last updated on November 13th, 2025 at 7:02am MST